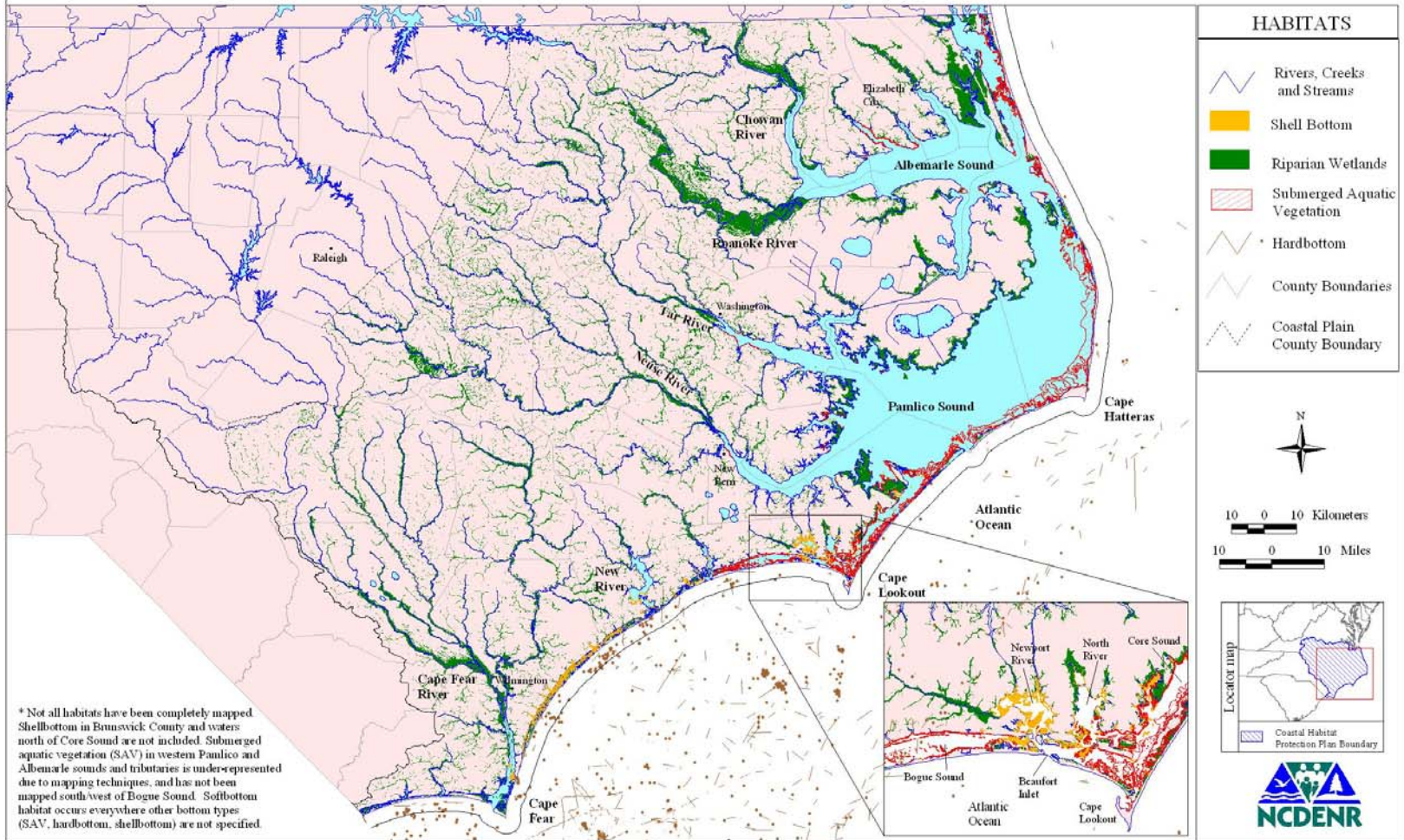


General Location of Mapped Fish Habitats in Coastal North Carolina*



* Not all habitats have been completely mapped. Shellbottom in Brunswick County and waters north of Core Sound are not included. Submerged aquatic vegetation (SAV) in western Pamlico and Albemarle sounds and tributaries is under-represented due to mapping techniques, and has not been mapped south/west of Bogue Sound. Softbottom habitat occurs everywhere other bottom types (SAV, hardbottom, shellbottom) are not specified.